



St. Patrick's Day Rhythm Game



Printing Instructions:

Print on regular white paper or cardstock. Laminate if desired. Print game cards on “fit” sizing option. Print the background using “actual size” option for full coverage.

Game Instructions:

Choose rhythm flash cards and Coin Challenge cards that are appropriate to the level of your student(s). Use the blank cards to individualize the game even further. Can be used as a single or multi-player game.

Materials Needed:

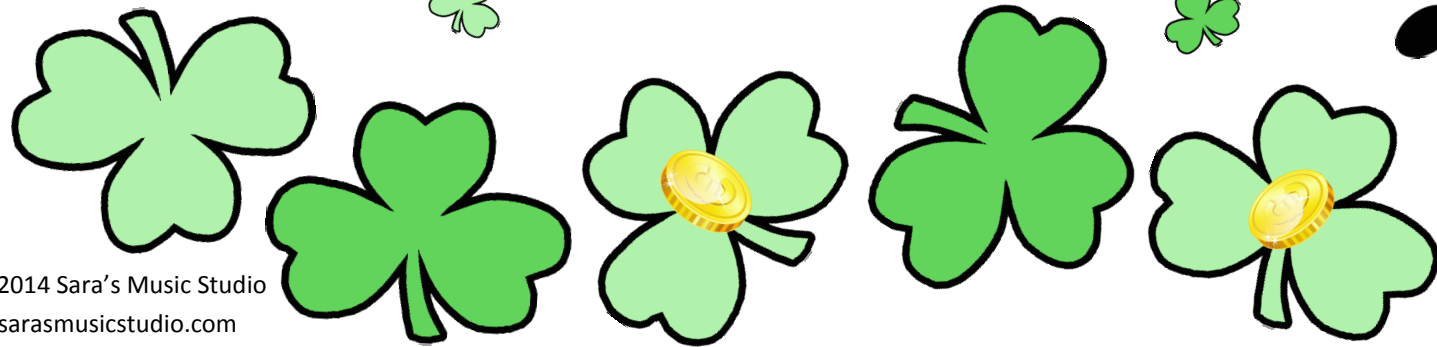
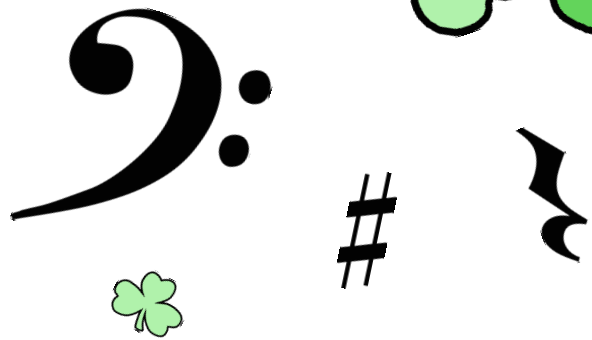
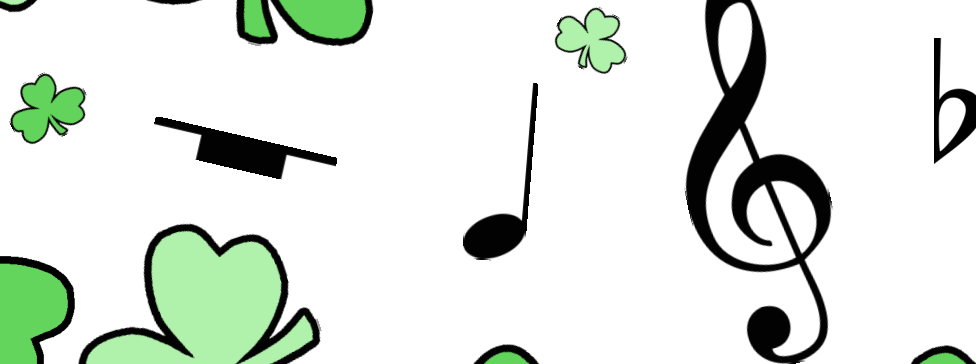
- Shamrock Game Board
- Coin Challenge Cards
- Rhythm Flash Cards
- Dice or a dice app
- Game pieces (be creative!)
- **Optional:** Use gold foil wrapped chocolate coins as prizes at the end.



Finegan the Fiddler lost his pot of gold!

Students can help him find it by traveling down the shamrock path. Roll the die to see where you will land. If you land on a regular shamrock, you must correctly clap, tap, or play a rhythm flash card. If you land on a shamrock with a coin on it, you must complete a Coin Challenge card! Look out for the big coins — Finegan the Fiddler is tricky, and he might send you back to the beginning if he thinks that are after his pot of

Start



Fine!



Play all the **G's** on the piano
from **HIGH** to **LOW**
with LH finger number 2.

Play all the **C's** on the piano
from **HIGH** to **LOW**
with RH finger number 1.

Play all the **A's** on the piano
from **LOW** to **HIGH**
with RH finger number 4.

Play all the **D's** on the piano
from **LOW** to **HIGH**
with LH finger number 5.

Play all the **B's** on the piano
from **HIGH** to **LOW**
with LH finger number 5.

Play all the **E's** on the piano
from highest to lowest
with RH finger number 2.

Finegan the Fiddler
says **MOVE AHEAD**
one space.



Play all the **F's** on the piano
from **LOW** to **HIGH**
with LH finger number 1.

Play in leaps of a 5th
from Middle C to the RIGHT.

Play a C Major Scale.

Play in leaps of a 5th
from Middle C to the LEFT.

Play a G Major Scale.

Play the first phrase of
Ode to Joy by ear.
Start on any E.

Spell the word FACE using
keys on the piano.

Finegan the Fiddler
says **MOVE AHEAD**
one space.



Play a trouble spot in one of
your songs 3 times correctly.

Play a _____ chord
in all inversions.

Play a _____ scale.

Play a _____ chord
in all inversions.

Play a _____ scale.

Complete this task:

Play a _____
I-IV-I-V7-I chord progression.

Finegan the Fiddler
says **MOVE AHEAD**
one space.



Play a _____
I-IV-I-V7-I chord progression.

Complete this task:

Complete this task:

Complete this task:

Complete this task:

Complete this task:

Complete this task:

Complete this task:

Complete this task:

